

Gas Regulator
IM-055

Dual pressure reduction system enables precise pressure adjustment. The pressure gauges are designed to suit with incubator use.

Primary Gauge 0~25Mpa
Secondary Gauge 0~0.3Mpa



Air Filter Kits
IF-200 (for CPI/CPM-165)

The optional 0.3μ (pore size) glass paper air dust filters capture dust particles and fungus spores circulating in the chamber, reducing the risk of contamination.

Replacement Air Dust Filter IF-15



Shelves and Shelf Brackets

Shelves made of stainless steel, sturdy with smooth surface. Shelf brackets come in a set of two and easy to install.

CPI/CPM-165 Shelf 165001
CPI/CPM-165 Brackets 165002 (2 / set)



Glass Small Windows
GAW-165DH Option only for CPI/CPM-165

Optional glass small windows can be replaced with standard door and can accommodate to high temperature during heat sterilization.


No. of windows: 3
Window size: W377×H126mm
Type of Glass: Tempered Glass (t: 4mm)



Gas Guard System
GS-701

Gas Guard System switches the gas supply source to a backup cylinder when a cylinder in use runs out. Built-in audio and visual alarms notify when the switching function is activated.

Dimensions W210×D390×H94mm
Weight 4.5Kg Power Supply AC100/110/220V



Auto Gas Analyzer
AGA-2008

Auto Gas Analyzer is equipped with a rechargeable built-in battery and can measure both CO₂ and O₂ concentration.


CO₂ Measuring Range: 0~18.0%
O₂ Measuring Range: 0~22.0%
Dimensions: W150×D280×H187mm
Weight: 4.5Kg
Power Supply: AC100V/110V/220V



163L Incubator Pedestals
IM-011/IM-033

163L incubator can be secured on stable pedestals. Tools for securing the pedestal onto the floor or wall are also available.

IM-011 (with casters)
W700×D635×H600mm
IM-033 (with casters for two-tiered incubators)
W700×D635×H150mm



475L Incubator Pedestals
IM-475STD

Incubator can be secured on stable pedestals. Portable with casters.

IM-475STD
W877×D684×H365mm

 Please note that only products are subject to warranty. Any loss or damage caused by product malfunctions is out of our warranty liability.



URL <http://www.astec-bio.com> E-mail info@astec-bio.com

HEAD OFFICE:
4-6-15, Minamizato, Shime, Kasuya, Fukuoka,
811-2207 Tel: +81-92-935-5585 Fax: +81-92-936-6613

SHANGHAI OFFICE:
Room 705, 7th Floor, Building 16, No. 1977
Jinshajiang-Road, Shanghai, China, 200333
TEL: +86-21-6438-0288 FAX: +86-21-6438-0488

KOREA OFFICE:
Room NO.307, Gaebong-ro 6-gil, Guro gu, Seoul Korea
TEL: +82-2-2611-4281 FAX: +82-2-2611-4285

Direct Heat Type CO₂/MULTI-GAS INCUBATOR



165L (5.8ft³) Capacity

475L (16.8ft³) Capacity

DIRECT HEAT CO₂/MULTI GAS INCUBATOR

The BEST INCUBATOR for cells! Dry-Heat Sterilization Function as standard!

1 Dry-Heat Sterilization

Residual toxic free with 140 °C Dry-Heat Sterilization.

2 Large LCD Touch Panel

Improved legibility and operability.
Satisfactory Graph, Log and Event features are newly added.

3 Temperature Stability

Temperature distribution within $\pm 0.3^{\circ}\text{C}$ for 165L and $\pm 0.5^{\circ}\text{C}$ for 475L,
providing optimal environment for cells and tissues.

4 High Humidity

Maintaining humidity in the chamber within $95\% \pm 4\%$ provides excellent temperature stability, and maintains optimal osmolarity of media as synergetic effect.

5 Log /Event Data

Easy to record and output incubator daily data in CSV format to USB flash memory by connecting to the USB port located at right lateral of control panel.
(Log: date, time, temp., gas concentration, no. of door open/close Event: CO₂ Alarm, and so on. 79 kinds data)

6 Gas Guard Function (Factory Option)

An automatic cylinder switching device. The devices for CO₂ and O₂ (N₂) control can be built-in individually.

7 CO₂ Auto Zero Calibration Function

Model equipped with the IR sensor can be calibrated for CO₂ zero once in every 10 days so that it contributes to the accurate sensor control.

8 O₂ Auto Span Calibration

Model equipped with the O₂ sensor can be calibrated for O₂ span once in every 7 days so that it contributes to the accurate sensor control.

9 Auto Set Up

Set Up Mode is to stop gas supply and alarm function during setting up or when temperature and/or humidity is not stable. This mode deactivates after 12 hours automatically and start accurate control.

10 Door Options

Optional Glass Small Windows for 165L capacity and Double Glass Doors for 475L capacity are available.

11 Stackable

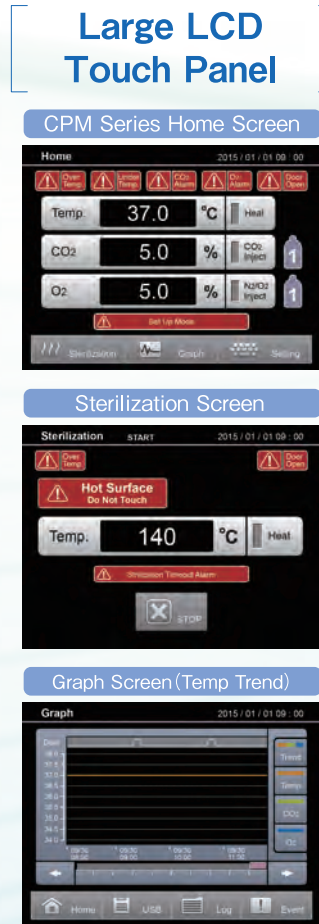
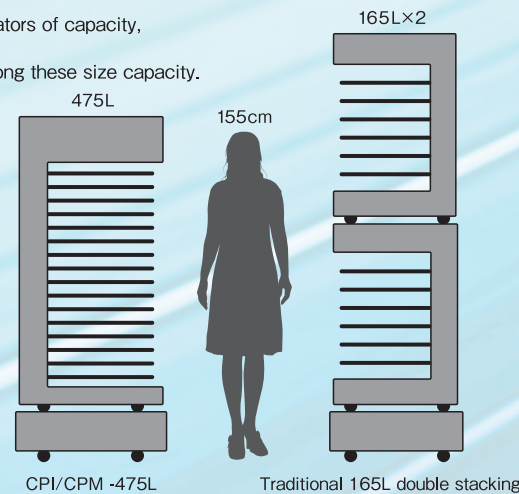
165L incubators are stackable up to two levels using dedicated brackets.

■ Comparison of large capacity incubator with traditional incubator

Not only large capacity 475L, approx. 3 traditional incubators of capacity, but also the temperature distribution within $\pm 0.5^{\circ}\text{C}$. It also provides the highest humidity 85%RH or more among these size capacity.



Double Glass Doors on the large capacity, 475L



Easily viewable design for Gas Concentration, Temperature, Cylinder No. in use (when Gas Guard function enabled) and Alarm Messages. User-Friendly interface and good response touch panel provide intuitive operations.



■ CPI/CPM-475 Specifications

Model	CPI-475	CPI-475R	CPM-475	CPM-475R
Exterior dimensions	W817(32.2) × D752(29.6) × H1424(56.1) mm(in.)*			
Inner Chamber Dimensions	W701(27.6) × D594(23.4) × H1145(45.1) mm(in.)			
Capacity	475L (16.8ft ³)			
Exterior	Bonderized Steel Plate with Electrostatic Baking Coating			
Interior	Stainless-Steel Plate SUS304			
Inner Door	Tempered Glass			
Shelves	W620mm × D546mm × H11mm (14 shelves standard)			
Temperature Control	PID Control			
Temperature Range	Ambient +5°C~50.0°C			
Temperature Control Accuracy	±0.1°C (During sterilization: ±3°C)			
Temperature Uniformity	±0.5°C (During sterilization: ±10°C)			
Sterilization Temp.	50.0°C~140.0°C			
Sterilization Time	0.1~10.0 hours			
CO ₂ Sensor	T/C	IR	T/C	IR
CO ₂ Control Range	0.0%~20.0%			
CO ₂ Control Accuracy	±0.2%			
O ₂ Sensor	-		Galvanic Battery	
O ₂ Control Range	-		3.0%~80.0%	
O ₂ Control Accuracy	-		±0.5%	
Humidity	85%RH or more			
Humidity System	Natural Evaporation (Humidity Pan)			
Safety Function/Alarms	Safety Cut-off/Alarm: Temp., CO ₂ , O ₂			
Rated Current	AC100-120V 13A(Max.)/AC 200-240V 6.5A (Max.) 50Hz/60Hz			
Power Consumption	1300W(Max.)			
Weight	150Kg			
Option	Analog Output, Alarm Contact Output, Gas Guard, HEPA Filter Kit			

■ CPI/CPM-165 Specifications

Model	CPI-165	CPI-165R	CPM-165	CPM-165R
Exterior dimensions	W625(24.6) × W635(25.0) × H916(36.1) mm(in.)*			
Inner Chamber Dimensions	W510(20.1) × W500(20.0) × H640(25.2) mm(in.)			
Capacity	163L (5.8ft ³)			
Exterior	Bonderized Steel Plate with Electrostatic Baking Coating			
Interior	Stainless-Steel Plate SUS304			
Inner Door	Tempered Glass			
Shelves	W435mm × D435mm × H11mm (4 Shelves standard)			
Temperature Control	PID Control			
Temperature Range	Ambient +5°C~50.0°C			
Temperature Control Accuracy	±0.1°C (During sterilization: ±3°C)			
Temperature Uniformity	±0.3°C (During sterilization: ±3°C)			
Sterilization Temp.	50.0°C~140.0°C			
Sterilization Time	0.1~10.0 hours			
CO ₂ Sensor	T/C	IR	T/C	IR
CO ₂ Control Range	0.0%~20.0%			
CO ₂ Control Accuracy	±0.1%			
O ₂ Sensor	-		Galvanic Battery	
O ₂ Control Range	-		2.0%~80.0%	
O ₂ Control Accuracy	-		±0.5%	
Humidity	95%±4%RH			
Humidity System	Natural Evaporation (Humidity Pan)			
Safety Function/Alarms	Safety Cut-off/Alarm: Temp., CO ₂ , O ₂			
Rated Current	AC100-120V 10A(Max.)/AC 200-240V 5A (Max.) 50Hz/60Hz			
Power Consumption	1000W(Max.)			
Weight	85Kg			
Option	Analog Output, Alarm Contact Output, Gas Guard, HEPA Filter Kit			

*The specification may change without prior notice.
The specifications are based on our criteria.
* Projection portion excluded